

# Walking Into the Future: How Regenerative Biologics Elevate Patient Outcomes

Presented by Dr. Jerry Bailey



# Allograft Human Cellular Tissue: The Master Builders

Allograft human cellular tissue represents a sophisticated biological solution that goes far beyond simple wound coverage. These advanced tissue matrices harness the body's innate healing mechanisms to restore damaged structures at the cellular level.



## Calms Inflammation

Modulates the inflammatory cascade to create an optimal healing environment



## Promotes Angiogenesis

Stimulates new blood vessel formation to restore perfusion and nutrient delivery



## Provides Scaffolding

Creates a three-dimensional framework that guides organized tissue regeneration



## Modulates Immune Response

Balances immune activity to prevent rejection while supporting repair

**It doesn't just patch damage. It restores function.**

Unlike traditional wound care products that simply cover defects, allograft tissue actively participates in the regenerative process. The bioactive components within these tissues communicate with host cells, orchestrating a coordinated repair response that results in functional tissue restoration rather than scar formation.[6,7]

# The Biological Powerhouse: Components of Umbilical Cord Tissue

Umbilical cord tissue contains an extraordinary array of bioactive components that work synergistically to promote healing. Understanding this complex biological architecture helps explain why these allografts deliver superior clinical outcomes across diverse podiatric applications.



## Cellular Components

- Mesenchymal Stem Cells
- Fibroblasts
- Epithelial Cells
- Exosomes



## Structural Components

- Extracellular Matrix
- Collagen (Types I, III, V)
- Hyaluronic Acid
- Proteoglycans



## Growth Factors & Cytokines

- VEGF (Vascular Endothelial Growth Factor)
- PDGF (Platelet-Derived Growth Factor)
- FGF (Fibroblast Growth Factor)
- EGF (Epidermal Growth Factor)
- TGF- $\beta$  (Transforming Growth Factor Beta)
- IL-10 (Interleukin-10)

Each component category plays a distinct yet interconnected role in tissue regeneration. The cellular elements provide regenerative capacity and signaling molecules, structural components offer architectural support and biochemical cues, while growth factors orchestrate the complex cascade of healing events. This biological sophistication explains the clinical efficacy observed in challenging podiatric cases.

# Cellular Components: The Regenerative Workforce

The cellular fraction of umbilical cord tissue contains specialized cell populations that drive tissue repair through multiple complementary mechanisms. These cells don't simply fill defects—they actively remodel damaged tissue and restore physiological function.

## Mesenchymal Stem Cells (MSCs)

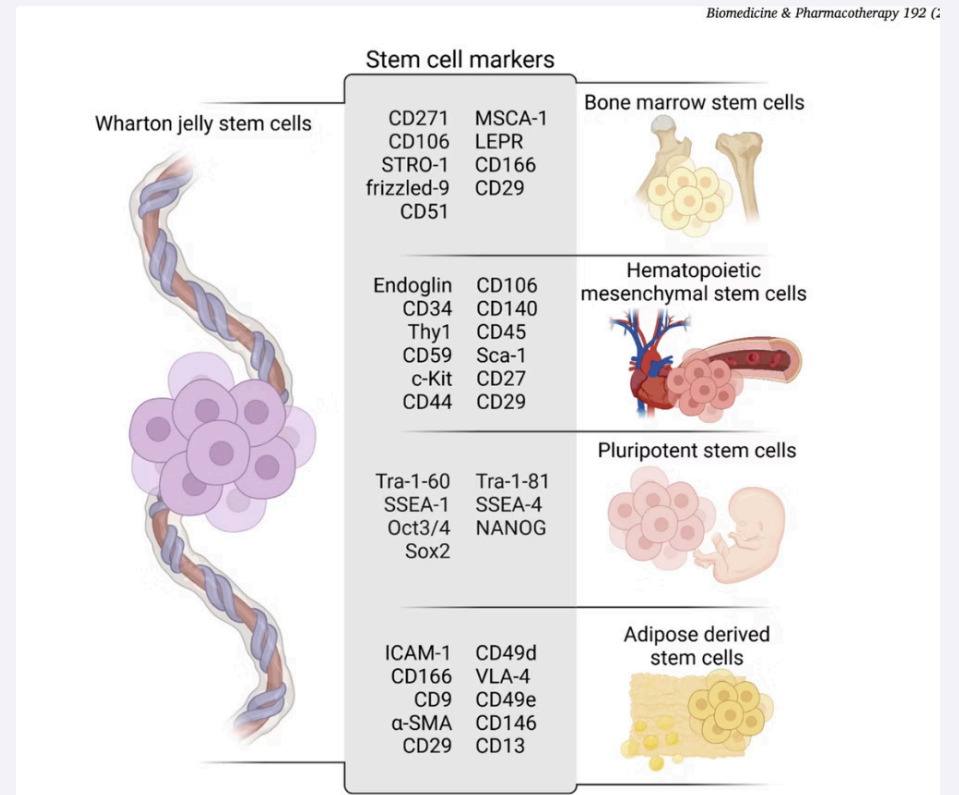
Multipotent cells capable of differentiating into bone, cartilage, and connective tissue lineages. MSCs secrete bioactive molecules that promote structural support and homeostasis while exhibiting potent immunomodulatory properties that balance inflammatory responses. They aid in tissue maintenance and repair through sophisticated paracrine signaling and extracellular matrix interaction.

## Fibroblasts

Primary producers of extracellular matrix proteins, including collagen and elastin. These cells play a critical role in wound closure and structural tissue formation, regulating cell-to-cell communication and matrix remodeling during tissue adaptation. Fibroblasts maintain tissue integrity and flexibility over time, ensuring durable repair.

## Epithelial Cells

Form protective layers that regulate molecular exchange across tissue barriers. These cells support homeostasis maintenance and selective permeability while contributing to tissue architecture and repair following structural disruption. Epithelial cells provide a foundation for organized regeneration and seamless integration with surrounding tissues.



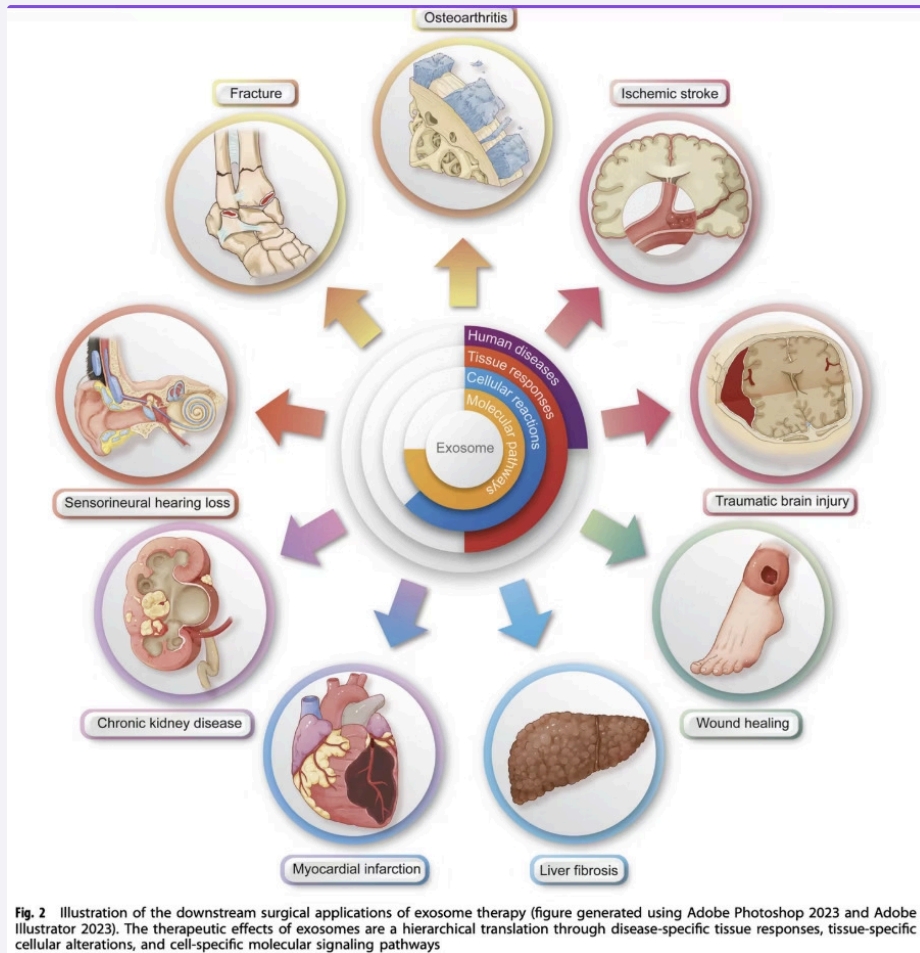
❏ **Clinical Pearl:** The synergistic action of these three cell types creates a comprehensive regenerative response that addresses both structural and functional restoration in podiatric tissues.

# Exosomes: Cellular Messengers of Regeneration

Exosomes represent one of the most sophisticated signaling mechanisms in regenerative medicine. These nanoscale extracellular vesicles (30-150 nm) are secreted by cells and carry a complex cargo of proteins, lipids, mRNA, and microRNA that can reprogram recipient cells and modulate their behavior.

## Mechanisms of Action

Exosomes facilitate intercellular communication by delivering bioactive molecules directly into target cells. This cargo transfer can alter gene expression, modulate inflammatory pathways, promote angiogenesis, and enhance cell survival in damaged tissues. Unlike growth factors that bind to surface receptors, exosomes deliver their molecular payload directly into the cytoplasm, resulting in more sustained biological effects.



01

## Cell-to-Cell Signaling

Transfer molecular instructions between cells to coordinate healing responses

03

## Tissue Protection

Shield cells from apoptosis and oxidative stress in compromised environments

The exosome fraction of umbilical cord tissue allografts may represent the "secret weapon" behind their clinical efficacy. These biological nanoparticles can penetrate deep into damaged tissue, cross biological barriers, and deliver regenerative signals to cells that traditional growth factors cannot reach. Their stability and ability to modulate multiple healing pathways simultaneously make them invaluable contributors to the overall regenerative capacity of allograft tissues.

02

## Anti-Inflammatory Activity

Reduce destructive inflammation while preserving beneficial immune function

04

## Angiogenic Promotion

Stimulate formation of new blood vessels to restore tissue perfusion